

Annual Community Policing Plan

Northern Police Station



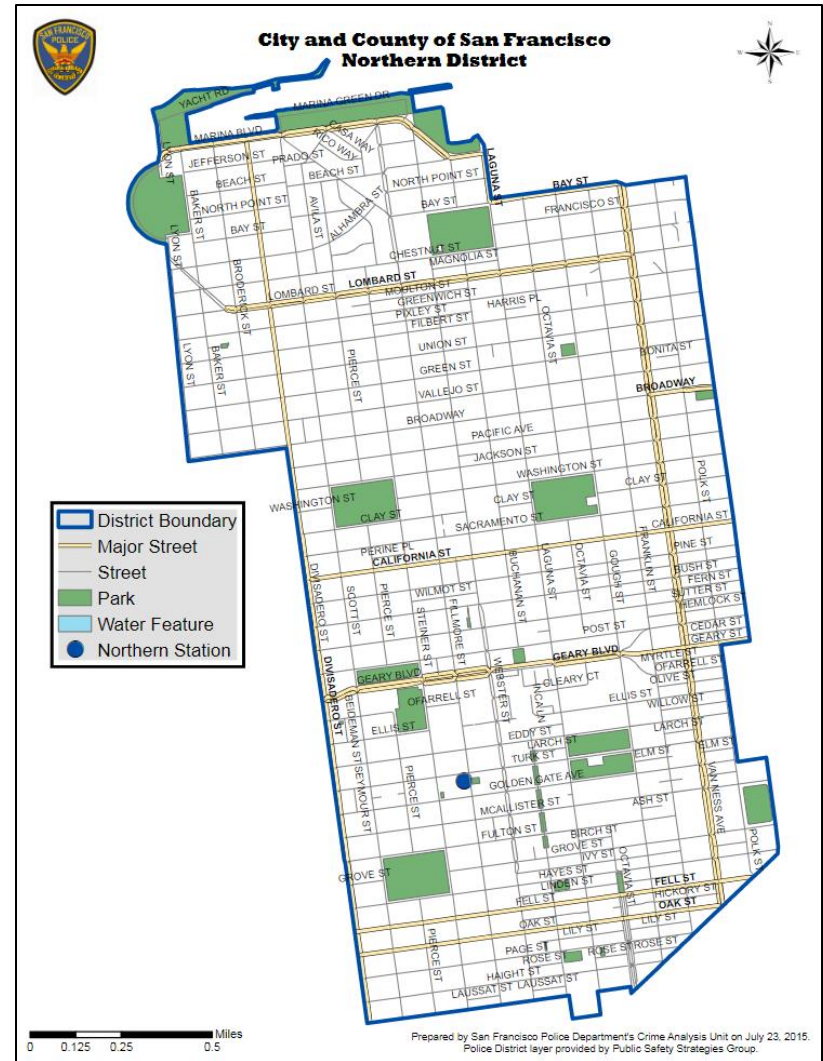
CITY & COUNTY OF SAN FRANCISCO

Police Department

11.1.2024

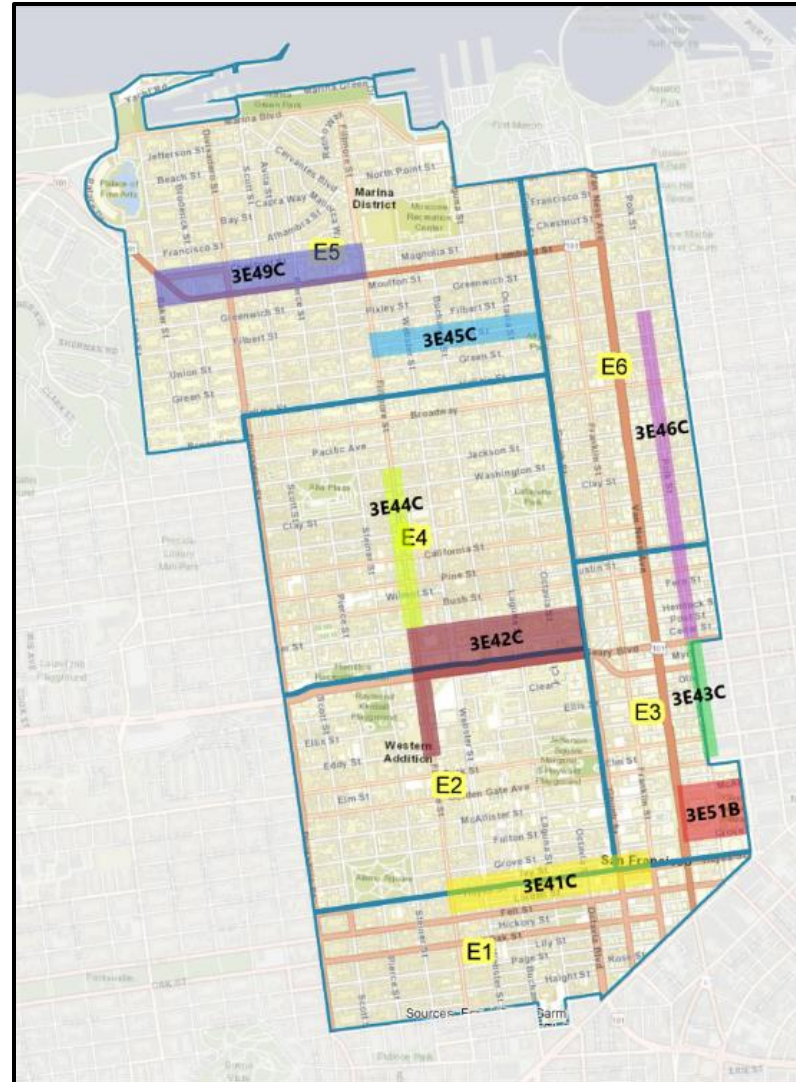
Northern District Overview

- Northern District boundary lines are Divisadero Street (west border), Marina Boulevard (north border), Larkin Street (east border), and Waller Street/Market Street (south border)
- Northern District encompasses several district neighborhoods including the following: Hayes Valley, Western Addition, Polk Gulch, Civic Center, Cathedral Hill, Japantown, Russian Hill, Pacific Heights, Cow Hollow, and the Marina.



Northern District Footbeats (When Staffing Permits)

- 3E41C: Haight Street Corridor
- 3E42C: Lower Fillmore Street & Japantown
- 3E43C: Lower Polk Street Corridor
- 3E44C: Upper Fillmore Street Corridor
- 3E45C: Union Street Corridor
- 3E46C: Upper Polk Street Corridor
- 3E49C: Chestnut Street Corridor
- 3E51B: City Hall



Northern District Crime Trends

- Automobile burglaries continue to plague the Northern District. The primary locations are the Palace of Fine Arts, Japantown, and Alamo Square.
 - Additional officers have been deployed to the aforementioned areas to mitigate the automobile burglaries.
- Several neighborhoods have seen an increase in the unhoused population taking over sidewalks and alleys.
 - Officers assigned to the city-wide H.S.O.C. unit are working with various San Francisco agencies to ensure encampments are addressed.

Goals and Objectives

- **Goal 1: Communication**
 - How will Northern Station ensure honest, transparent, and empathetic dialogue between the Northern District community and the San Francisco Police Department?
- **Goal 2: Education**
 - How can Northern Station empower their citizens to improve community safety?
- **Goal 3: Problem-Solving**
 - How can Northern Station work together with community members and other City organizations to address topics of concern?
- **Goal 4: Relationship Building**
 - How can Northern Station establish a strong, trust and respectful relationship with the Northern District community?
- **Goal 5: SFPD Organization**
 - How can the S.F.P.D. lead via community policing efforts and demonstrate a guardian mindset?

Goal 1: Communication

Honest, transparent, and empathetic dialogue between the SFPD and San Francisco Community.

- Ensuring Northern District Communities are aware of the monthly communities meeting with Captain Sawyer.
- Fielding and answering questions as transparent and as legally allowed.
- Participating in city-wide public safety meetings with community members and Chief Scott.
- Responding to and concerns sent via e-mail and placing a plan in motion to address their concerns.



Goal 2: Education

SFPD both trains and is trained by the communities it serves.

- Working with organizations such as the San Francisco Neighborhood Safety Team and publishing their safety pamphlets in the Northern Station newsletters.
- Inviting members of the San Francisco Neighborhood Safety Team to speak at monthly Northern Station community meetings. They provides tips and teaches community members how to keep themselves and their homes safe.
- Encouraging the youth to join the San Francisco Police Cadet Program to educate future generations and create future leaders of our communities.

Park Smart!
THE KEYS TO PARKED CAR SAFETY ARE IN YOUR HANDS!
If you love it, don't leave it.

DON'T TEMPT A CAR THIEF!
Car thieves only need seconds to break into your car. So Park Smart, and especially keep your trunk clear.
Take everything with you.

SAFE
SFPD

San Francisco Police Activities League
LAW ENFORCEMENT CADET PROGRAM
NOW ACCEPTING APPLICATIONS FOR THE SUMMER 2022 13TH ACADEMY CLASS

WHY YOU SHOULD JOIN:

- **BUILD YOUR NETWORK** - Learn about 21st century policing from law enforcement instructors and civilian employees.
- **LEADERSHIP AND CAREER SKILLS** - CPR and First Aid training, leadership roles, and internship opportunities available to all Cadets.
- **COMMUNITY ENGAGEMENT** - 1,000+ collective program volunteer hours from 2018 to 2020.
- **Chance to win a grant for eligible participants.**

ELIGIBILITY REQUIREMENTS:

- 14 - 20 years old
- Inside or attend school in San Francisco
- Enrolled in high school or college
- 2.0 GPA or higher
- Pass San Francisco Police Department background check

WHEN/WHERE:
6 week summer training June 6 - June 30, 2022.
Location: SFPD Academy.

FOR ADDITIONAL INFORMATION:

- Attend our information session **Wednesday, April 6** from 5 - 6 PM, OR on **Saturday, April 9** from 10-11 AM. Please register for one of the sessions.
<https://forms.gle/DYs45GCH2meZ5Z2g6>
- Question? Email: michael.j.coston@sf.gov or Call: (415) 403-4666

APPLY ONLINE BY FRIDAY, May 6TH AT 5:00 PM:
<https://sf10.forms.site/sfpd/pal/CadetApplication/index.html>

Goal 3: Problem-Solving

Increase safety through collaborative working partnerships between SFPD, community members, and organizations to identify and address local topics of concern.

- Utilizing Street Crisis Response Team to assist those suffering from mental health and substance use crises in the Northern District.
- Working alongside H.S.O.C. (Healthy Streets Operation Center) to ensure streets are clean and the unhoused are able to obtain resources and temporary housing.



Help for behavioral health crises on the streets

A community health approach to people experiencing mental health and substance use crises on the streets



Our Mission and Vision

Our vision is a vibrant and welcoming city where we come together to ensure that no San Franciscan is left to sleep on the street, and our streets are safe for everyone.

Through innovative and collaborative strategies, we will lead with services first to get unsheltered San Francisco residents housing solutions and the social services they need to achieve long-term stability.

[More Info](#)

Goal 4: Relationship-Building

Strong, trusting, and respectful relationships between SFPD and all facets of the San Francisco Community.

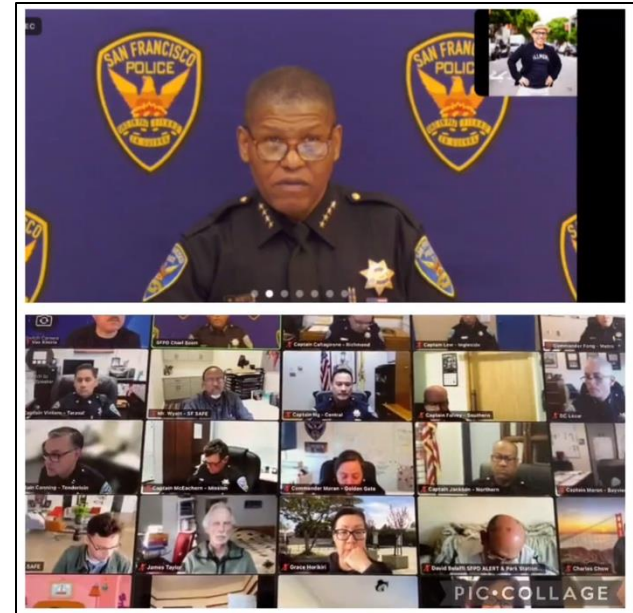
- Ensuring San Francisco Police Officers are on foot and present for Northern District events such as the Cherry Blossom Festival, SF PRIDE, Bay 2 Breakers, Fillmore Jazz Festival, Juneteenth, SF Women’s March, St. Patrick’s Day Parade, and many more.
- Hosting community meetings in person at Northern Stations community room.



Goal 5: SFPD Organization

SFPD organization and operation leads community policing efforts and demonstrates a guardian mindset.

- C.E.D. (Community Engagement Division) proactively engages with the community through relationship building, events, forums, panel discussions, participation in community events, working with community leaders and leading a variety of special programs to benefit local youth.
- The SFPD's vision is to seek out the appropriate measures, empower its marginalized employees, and dismantle patterns of racism and injustice within all sections of the organization. It is paramount that as the Department continues to grow and move into the 21st Century, we create a culture of learning and reflection. We must continue to strive to build a culture of inclusion and belonging for all Department members and the diverse communities we serve and protect.



Community Partners

The SFPD is committed to creating a safe, healthy, and vibrant community. Our spirit and work is guided by a guardian mindset, and we recognize that our role as protectors is rooted in empathy, understanding, and mutual respect. We partner and engage with community members and organizations to collaboratively identify and problem-solve local challenges and increase safety for residents, visitors, and officers.

- Northern Station C.P.A.B. (Community Police Advisory Board)
- Cathedral Hill Neighbors Association
- Russian Hill Neighbors Association
- Japantown Community Benefit District
- Civic Center Community Benefit District
- Fillmore Merchants Association
- Discover Polk Community Benefit District
- Marina and Cow Hollow Neighbors & Merchants Association
- Mo' MAGIC Collaborative
- Many many more!



Problem Solving

Community policing involves interaction between police officers and the citizens who work and live in the neighborhood. It is an organizational strategy that allows the police and community residents to work closely together in new ways to help solve the problems of crime and neighborhood decay.

- Quality of Life Issues:
 - Working with numerous San Francisco agencies (Department of Public Works, Department of Emergency Management, Healthy Streets Operation Center, Department of Homelessness and Supportive Housing, Homeless Outreach Team) to address quality of life issues in the Northern District.
- Commercial/Residential Burglaries
 - Utilizing the Northern Station Street Crimes Unit to monitor suspects casing businesses and residential communities.
- Automobile Burglaries
 - Assigning additional officers (when available) to patrol the Palace of Fine arts, Japantown, and Alamo Square.

Community Events

DATE	COMMUNITY EVENT	LOCATION	COMMUNITY PARTNER
1/14/25	Community Meeting	Northern Station	Community Members
TBD	Walk For Life	Civic Center	Community Members
1/28/25	CPAB Meeting	Northern Station	Community Members
2/11/25	Community Meeting	Northern Station	Community Members
2/25/25	CPAB Meeting	Northern Station	Community Members
TBD	Tibet March	Civic Center to Union Square	Community Members
TBD	St. Patricks Day Parade	Civic Center	Community Members
3/11/25	Community Meeting	Northern Station	Community Members
3/25/25	CPAB Meeting	Northern Station	Community Members
TBD	Cherry Blossom Festival	Japantown	Community Members
4/8/25	Community Meeting	Northern Station	Community Members
4/22/25	CPAB Meeting	Northern Station	Community Members
TBD	Bay to Breakers	Northern District	Community Members
5/13/25	Community Meeting	Northern Station	Community Members
5/20/25	CPAB Meeting	Northern Station	Community Members
TBD	Union Street Festival	Union Street	Community Members
TBD	Juneteenth Festival	Fillmore Street	Community Members
TBD	PRIDE SF	Civic Center	Community Members
6/10/25	Community Meeting	Northern Station	Community Members
6/24/25	CPAB Meeting	Northern Station	Community Members
TBD	Fillmore Jazz Festival	Fillmore Street	Community Members
7/8/25	Community Meeting	Northern Station	Community Members
7/22/25	CPAB Meeting	Northern Station	Community Members
TBD	National Night Out	Ella Hill Hutch	Community Members
8/12/25	Community Meeting	Northern Station	Community Members
TBD	Nihonmachi Street Fair	Japantown	Community Members
9/9/25	Community Meeting	Northern Station	Community Members
9/23/25	CPAB Meeting	Northern Station	Community Members
TBD	Fleet Week	Marina Greens	Community Members
10/14/25	Community Meeting	Northern Station	Community Members
10/21/25	CPAB Meeting	Northern Station	Community Members
TBD	Halloween Event	Northern District	Community Members
11/11/25	Community Meeting	Northern Station	Community Members
11/18/25	CPAB Meeting	Northern Station	Community Members
12/9/25	Community Meeting	Northern Station	Community Members
12/23/25	CPAB Meeting	Northern Station	Community Members

Metrics

- The success of Northern Stations Community Policing Plan can be tracked by reviewing the change of crime statistics over a period of time.

Weekly COMPSTAT Part 1 Crimes- from 06-19-2023 To 06-25-2023*

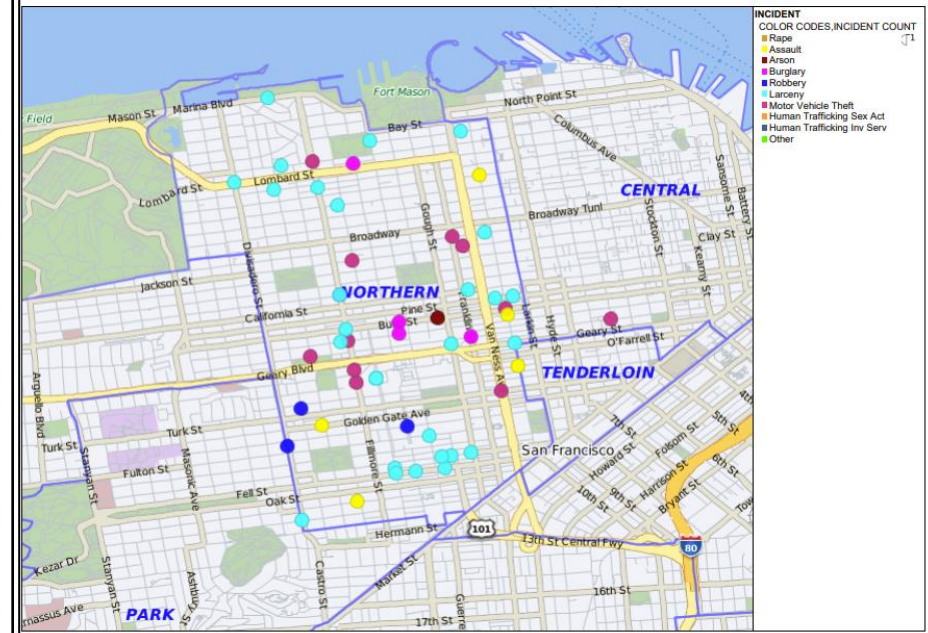
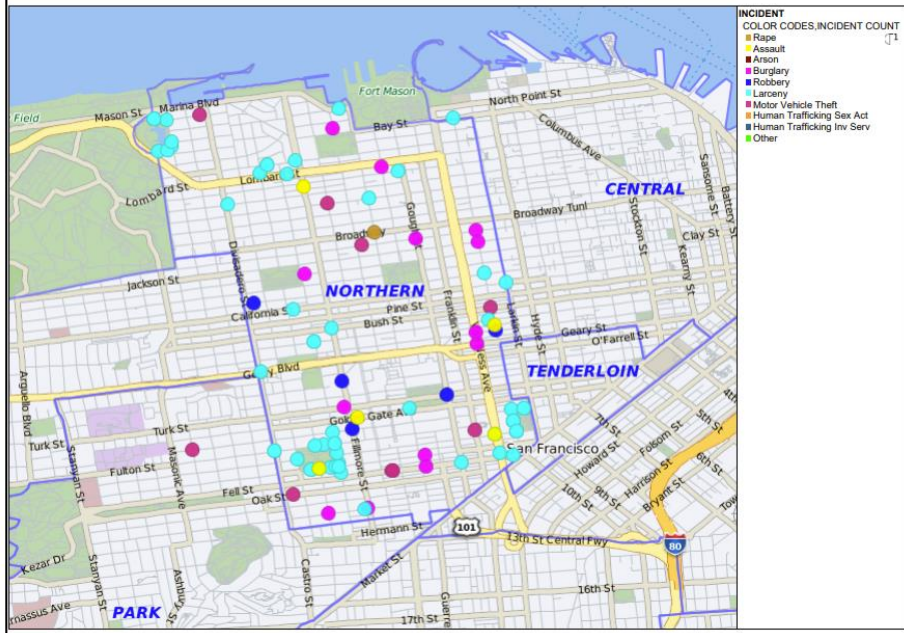
NORTHERN

REPORT TYPE	Crime Category	This Week	Last Week	% Change	2023 YTD	2022 YTD	% Change
PART 1 VIOLENT CRIMES	RAPE	1	0	100.00%	10	15	-33.33%
	ROBBERY	5	7	-28.57%	149	134	11.19%
	ASSAULT	5	5	0.00%	123	142	-13.38%
	HUMAN TRAFFICKING - SEX ACT	0	0	0.00%	0	1	-100.00%
PART 1 VIOLENT CRIMES Total		11	12	-8.33%	282	292	-3.42%
PART 1 PROPERTY CRIMES	BURGLARY	13	14	-7.14%	462	430	7.44%
	MOTOR VEHICLE THEFT	9	15	-40.00%	341	339	0.59%
	ARSON	0	1	-100.00%	22	30	-26.67%
	LARCENY THEFT	68	117	-41.88%	2550	2848	-10.46%
PART 1 PROPERTY CRIMES Total		90	147	-38.78%	3375	3647	-7.46%
PART 1 CRIMES TOTAL		101	159	-36.48%	3657	3939	-7.16%

Weekly COMPSTAT Part 1 Crimes- from 10-21-2024 To 10-27-2024*

NORTHERN

REPORT TYPE	Crime Category	This Week	Last Week	% Change	2024 YTD	2023 YTD	% Change
PART 1 VIOLENT CRIMES	RAPE	0	0	0.00%	17	25	-32.00%
	ROBBERY	3	6	-50.00%	204	271	-24.72%
	ASSAULT	6	2	200.00%	198	223	-11.21%
	HUMAN TRAFFICKING - SEX ACT	0	0	0.00%	0	1	-100.00%
PART 1 VIOLENT CRIMES Total		9	8	12.50%	419	520	-19.42%
PART 1 PROPERTY CRIMES	BURGLARY	5	14	-64.29%	578	821	-29.60%
	MOTOR VEHICLE THEFT	11	9	22.22%	489	618	-20.87%
	ARSON	1	0	100.00%	28	32	-12.50%
	LARCENY THEFT	36	79	-54.43%	3170	5041	-37.12%
PART 1 PROPERTY CRIMES Total		53	102	-48.04%	4265	6512	-34.51%
PART 1 CRIMES TOTAL		62	110	-43.64%	4684	7032	-33.39%



Review and improvement

The San Francisco Police Department is committed to excellence in law enforcement and is dedicated to the people, traditions and diversity of our City. Our mission is to provide service with understanding, response with compassion, performance with integrity and law enforcement with vision. As part of our ongoing outreach to engage with the community and measure our success, the Department has created a community survey link to obtain valuable community feedback for our community events and programs, which will assist the Department in the development of our strategies to meet the needs of the community.

- Use of data and metrics
- Surveys
- Community Input
- Meetings with community stakeholders
- Meetings with officers assigned to area or issue

Community Events Survey

If you recently attended or participated in an event or program hosted by the Department such as Coffee with a Cop, National Night Out, or ALERT program, please take some time to fill out our community events survey.

[TAKE OUR COMMUNITY EVENTS SURVEY](#)

Powered by SurveyMonkey

Foot & Bike Patrol Survey

If you interacted with foot beat or bike patrol officers, please take some time to fill out our foot and bike patrol survey. Your response will help SFPD determine community policing and crime strategies.

[TAKE OUR FOOT & BIKE PATROL SURVEY](#)

Powered by SurveyMonkey

Implicit Bias Survey

If you recently interacted with our officers, please take some time to fill out our implicit bias survey which will measure progress in the Department's commitment to impartial policing and procedural justice.

[TAKE OUR IMPLICIT BIAS SURVEY](#)

Powered by SurveyMonkey

Thank you.

Any questions?

You can reach me at jason.sawyer@sfgov.org